



PRICE INDEX OF WESTERN AUSTRALIAN PRODUCED HARDWOODS

EMBARGO: 11:30AM (CANBERRA TIME) WED 14 OCT 1998

C O N T E N T S

	<i>page</i>
Notes.....	2
Summary of findings	4
Price Indexes of Western Australian Produced Hardwoods	7
Explanatory Notes	8

- For more information about these and related statistics, contact Bob Pearse on Perth (08) 9360 5147 or refer to the back cover of this publication.

NOTES

FORTHCOMING ISSUES	ISSUE	RELEASE DATE
	December 1998	14 January 1999

ABOUT THIS PUBLICATION

This publication, prepared by the Australian Bureau of Statistics on behalf of the Western Australian Department of Conservation and Land Management and the Forest Industries Federation (WA) Inc, presents index numbers measuring changes in prices of Western Australian sawn hardwood timber.

The Price Index of Western Australian Produced Hardwoods (WAPHI) measures the change in prices of Western Australian sawn hardwoods. Individual price indexes are also published for each of the major hardwood timbers produced and sold by the Western Australian timber industry, namely:

- Green jarrah
- Green karri
- Dry jarrah

SYMBOLS AND OTHER USAGES	r	figure or series revised since previous issue
	..	not applicable
	n.a.	not available
	—	nil or rounded to zero

Colin Nagle
Regional Director, Western Australia

C O N T E N T S

		Page
COMMENTARY		
	Summary of findings	4
TABLES		
1	Price Indexes of Western Australian Produced Hardwoods	7
INFORMATION		
	Explanatory notes	8

SUMMARY OF FINDINGS

KEY FIGURES

PRICE INDEX NUMBERS

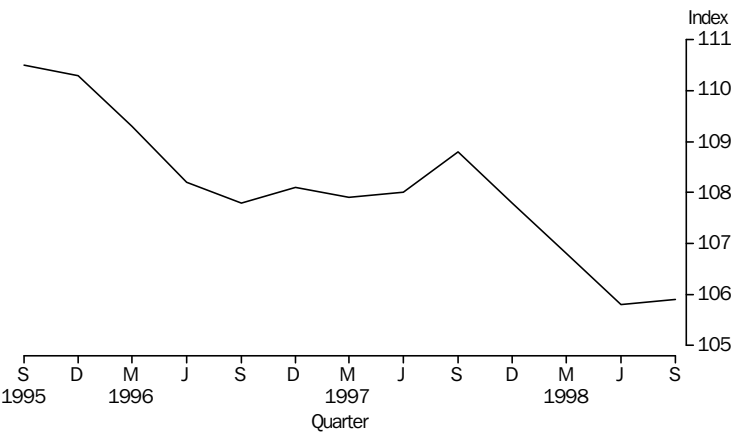
	<i>Jun qtr 98</i>	<i>Sep qtr 98</i>	<i>Jun qtr 98 to Sep qtr 98</i>
	Index number	Index number	% change
WA Produced Hardwoods	105.8	105.9	0.1
Green Jarrah Produced	103.2	104.2	1.0
Green Karri Produced	96.3	96.5	0.2
Dry Jarrah Produced	114.3	114.0	-0.3

PRICE INDEXES

PRICE INDEX OF WESTERN AUSTRALIAN PRODUCED HARDWOODS

The Western Australian Produced Hardwoods Index (WAPI) increased by 0.1% for the September quarter 1998, following decreases of 0.9% in the previous three quarters. For the year ending September quarter 1998, the index decreased 2.7%. Price changes for this quarter reflect continuing competition in the market place, causing price decreases for some products and the introduction of compensating increases for some others.

Price index of WAPI

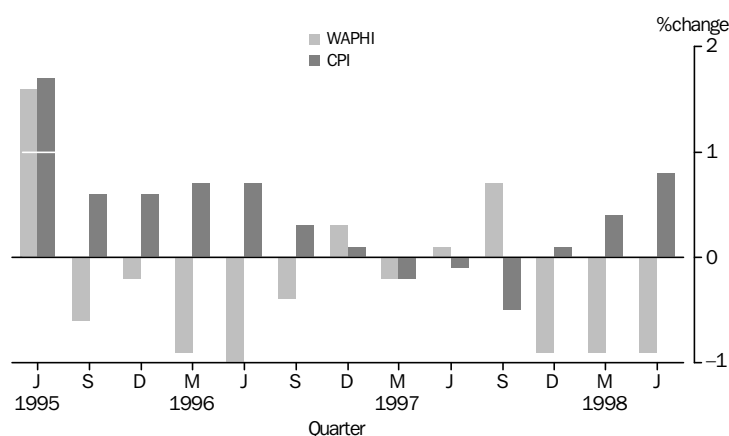


SUMMARY OF FINDINGS *continued*

The WAPHI does not always display the same trend as the Consumer Price Index (CPI). For example, the CPI for Perth, All Groups increased by 0.8% from the March quarter 1998 to the June quarter 1998; Health and Personal Care and Food recording the largest contributions to the quarter's increase. The WAPHI for the same period decreased by 0.9%.

The graph below shows a comparison between the percentage changes for the CPI All Groups for Perth and the WAPHI since June quarter 1995.

Comparison of WAPHI with CPI



PRICE INDEXES OF GREEN JARRAH AND GREEN KARRI PRODUCED

For the September quarter 1998 the index for green jarrah increased 1.0% and the index for green karri increased by 0.2%. Over the twelve months ended September quarter 1998 the indexes for green jarrah and green karri have decreased by 2.3% and 4.6% respectively. Price variation of sleepers and crossing timber for local, interstate and overseas markets have influenced the result for the September quarter. The reduced activity in the residential building industry since June 1994 has also had a significant impact on prices for green jarrah and green karri as the major market for these timbers is for roofing of residential buildings.

The index of new residential approvals for the Perth Statistical Division, however, increased 17.4% between the March and June quarters of 1998, the most significant quarterly increase since June quarter 1994.

.....

<i>Period</i>	<i>Index number(a)</i>	<i>% change from corresponding quarter of previous year</i>	<i>% change from previous period</i>
ALL HARDWOODS			
1995-96	109.6	..	-0.1
1996-97	108.0	..	-1.5
1997-98	107.3	..	-0.6
1997			
June	108.0	-0.2	0.1
September	108.8	0.9	0.7
December	107.8	-0.3	-0.9
1998			
March	106.8	-1.0	-0.9
June	105.8	-2.0	-0.9
September	105.9	-2.7	0.1
GREEN JARRAH			
1995-96	108.4	..	-0.7
1996-97	107.8	..	-0.6
1997-98	105.5	..	-2.1
1997			
June	107.3	-0.1	-0.7
September	106.6	-0.7	-0.7
December	106.8	-1.7	0.2
1998			
March	105.2	-2.7	-1.5
June	103.2	-3.8	-1.9
September	104.2	-2.3	1.0
GREEN KARRI			
1995-96	105.7	..	-1.2
1996-97	101.6	..	-3.9
1997-98	98.7	..	-2.9
1997			
June	100.8	-2.5	-0.5
September	101.2	-1.6	0.4
December	100.2	-1.4	-1.0
1998			
March	97.2	-4.0	-3.0
June	96.3	-4.5	-0.9
September	96.5	-4.6	0.2
DRY JARRAH			
1995-96	113.5	..	1.3
1996-97	113.0	..	-0.4
1997-98	114.7	..	1.5
1997			
June	113.8	1.1	0.7
September	115.7	3.2	1.7
December	114.1	1.1	-1.4
1998			
March	114.7	1.5	0.5
June	114.3	0.4	-0.3
September	114.0	-1.5	-0.3

(a) Base Index 1992-93 = 100.0

EXPLANATORY NOTES

INTRODUCTION

1 This publication presents index numbers measuring changes in prices for sawn timber produced from Western Australian produced hardwoods. They are calculated on the reference base 1992–93 = 100.0

SCOPE

2 The scope of the index is Western Australian produced sawn hardwood timber sold by Western Australian mills and merchants within Western Australia, interstate and overseas. Timber used for veneer, woodchips, particle board and posts and poles is not included.

ITEMS AND WEIGHTS

3 The indexes are fixed weight indexes. For the period prior to March quarter 1997, the items included in the index were selected and allocated value weights on the basis of sawn timber sold during 1992–93 to final users in Western Australia and merchants interstate and overseas. From March quarter 1997, the items included in the index and their value weights were based on sawn timber sold during 1995–96 valued at December 1996 prices.

4 Many of the selected items carry not only the weight of directly priced timbers, but also the weight of other timbers whose prices are considered to move similarly to those of the directly priced timbers.

COMPOSITION AND WEIGHTING IN REFERENCE YEAR 1995–96

<i>Contribution</i>	
<i>Item</i>	<i>%</i>
.....	
Green jarrah	27
Green karri	27
Dry jarrah	44
Dry karri	2
Total	100
.....	

PRICE MEASUREMENT

5 Most prices used in these indexes related to the mid-point of each month for the quarter up until the June quarter 1997. From the September quarter 1997 prices relate to the mid-point of the quarter. Prices are obtained from a representative sample of sawmillers and timber merchants (including exporters). The point of pricing is the last sale before final use; handling and delivery costs are included for local sales, if incorporated in the merchant's or sawmiller's price. For example, the price of timber sold to builders is the delivered on site price. Interstate sales are normally priced ex-mill and for exports, the price is generally free on board (fob).

6 As far as possible, actual transaction prices are used in the indexes. These are the prices *actually* paid by builders, joinery workshops, furniture manufacturers and other purchasers of the timber. The actual price paid can be described in various ways. For example, a price for a sawmiller's or merchant's product may be described in terms of the components that make up the price, such as 'list price less (particular types of) discount'. It is these *net* prices that buyers pay to sellers that the ABS aims to use in compiling these price indexes.

7 Price series relate to goods of fixed specifications with the aim of incorporating in the index, price changes for representative articles of constant

quality (eg. size, dimensions, stress grade). Consistent with this approach, prices in general relate to a standard representative set of transactions (in terms of quantity, delivery arrangements, destination, etc.) in order to avoid variations in price that are attributable solely to a changing mix of transactions over time.

INDEX NUMBERS

8 The index numbers for financial years are simple averages of the relevant quarterly index numbers.

REVISIONS

9 Index numbers for the current quarter and the previous quarter are preliminary and subject to revision. From time to time, index numbers for earlier periods may also be revised. This will occur whenever the ABS obtains more complete information or discovers that incorrect prices have been used.

ANALYSIS OF INDEX CHANGE

10 Care should be exercised when interpreting quarter-to-quarter movements in the indexes as short term movements do not necessarily indicate changes in trend.

11 Movements in indexes from one period to another can be expressed either as changes in 'index points' or as percentage changes. The following example illustrates the method of calculating index points changes and percentage changes between any two periods.

WAPHI

	September quarter 1998	105.9
<i>minus</i>	September quarter 1997	<u>108.8</u>
<i>equals</i>	Change in index points	-2.9

	Change in index points x 100	<u>-2.9 x 100</u>
<i>divided by</i>	December 1997	108.8
<i>equals</i>	Percentage change	-2.7

RELATED PUBLICATIONS

12 Users may also wish to refer to the following publications which are available from ABS Bookshops.

- Consumer Price Index, Eight Capital Cities (6401.0)
- Dwelling Unit Commencements (8741.5)
- House Price Index (6416.0)
- Building Approvals, Western Australia (8731.5)
- Building Activity, Western Australia (8752.5)

13 Current publications produced by the ABS are listed in the *Catalogue of Publications and Products* (1101.0). The ABS also issues, twice weekly, a *Release Advice* (1105.0) which lists publications to be released in the next few days. The catalogue and release advice are available from ABS offices.

UNPUBLISHED STATISTICS

14 As well as the statistics included in this and related publications, the ABS may have other relevant unpublished data available. Inquiries should be made to (08) 9360 5140 or to any ABS office.

SELF-HELP ACCESS TO STATISTICS

<i>PHONE</i>	Call 1900 986 400 for the latest statistics on CPI, Labour Force, Earnings, National Accounts, Balance of Payments and other topics. (Call cost is 75c per minute)
<i>INTERNET</i>	http://www.abs.gov.au
<i>LIBRARY</i>	A range of ABS publications is available from public and tertiary libraries Australia wide. Contact your nearest library to determine whether it has the ABS statistics you require.

WHY NOT SUBSCRIBE?

<i>PHONE</i>	+61 1300 366 323
<i>FAX</i>	+61 3 9615 7848

CONTACTING THE ABS

ABS provides a range of services, including: a telephone inquiry service; information consultancy tailored to your needs; survey, sample and questionnaire design; survey evaluation and methodological reviews; and statistical training.

<i>INQUIRIES</i>	<i>By phone</i>	<i>By fax</i>
Canberra	02 6252 6627	02 6253 1404
Sydney	02 9268 4611	02 9268 4668
Melbourne	03 9615 7755	03 9615 7798
Brisbane	07 3222 6351	07 3222 6283
Perth	08 9360 5140	08 9360 5955
Adelaide	08 8237 7400	08 8237 7566
Hobart	03 6222 5800	03 6222 5995
Darwin	08 8943 2111	08 8981 1218

POST Client Services, ABS, PO Box 10, Belconnen, ACT 2616

EMAIL client.services@abs.gov.au



2641050009988

ISSN 1323-0360

RRP \$15.00

